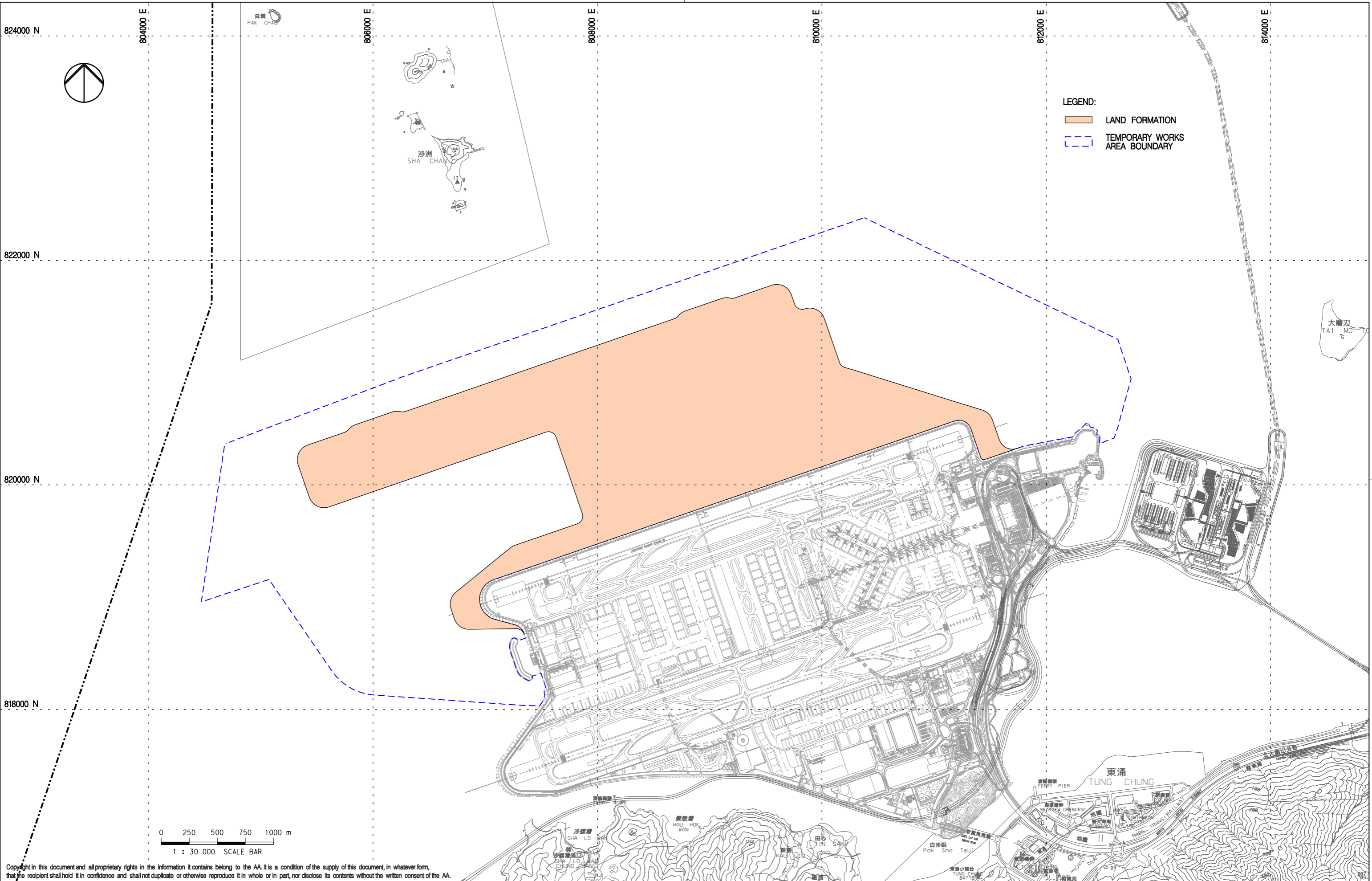


II. Location Plans for Planned Construction Works



Copyright in this document and all proprietary rights in the information it contains belong to the AA. It is a condition of the supply of this document, in whatever form, that the recipient shall hold it in confidence and shall not duplicate or otherwise reproduce it in whole or in part, nor disclose its contents without the written consent of the AA.

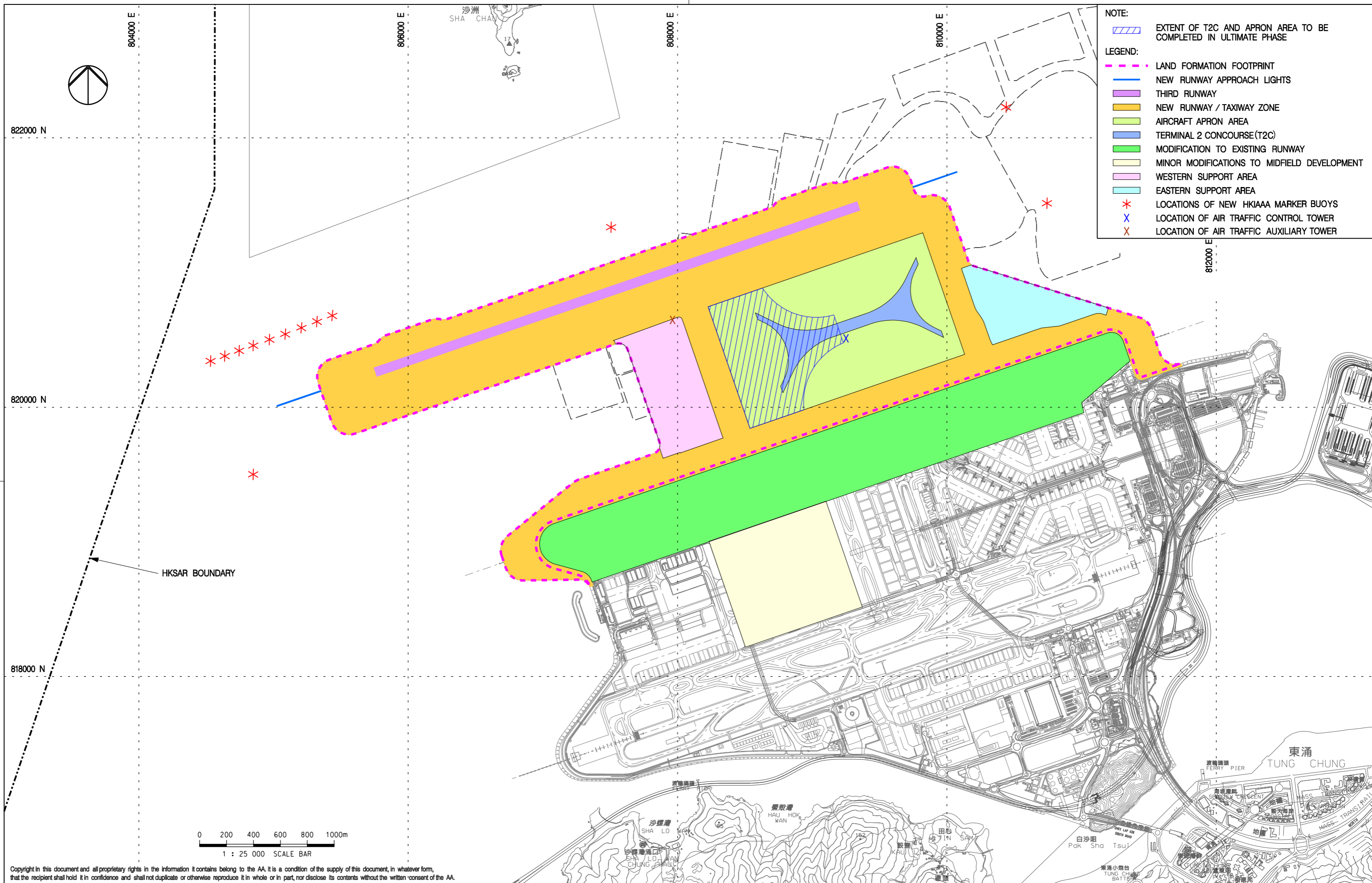
Rev.	Date	Description	Checked
A	31AUG15	FIRST ISSUE	DC
B	22OCT15	GENERAL REVISION	DC
C	05JUN17	GENERAL REVISION	AM



Title
PROPOSED TEMPORARY WORKS AREA FOR LAND FORMATION ACTIVITIES

Consultant's Signatures for Approval		Date
Design	DC	05JUN17
Checkers	DC	05JUN17
Approver	EC	05JUN17

EXPANSION OF HONG KONG INTERNATIONAL AIRPORT INTO A THREE-RUNWAY SYSTEM		Scale at A3
Drawing No.	Figure 1	1 : 30000
Rev.	C	



- NOTE:**
- EXTENT OF T2C AND APRON AREA TO BE COMPLETED IN ULTIMATE PHASE
- LEGEND:**
- LAND FORMATION FOOTPRINT
 - NEW RUNWAY APPROACH LIGHTS
 - THIRD RUNWAY
 - NEW RUNWAY / TAXIWAY ZONE
 - AIRCRAFT APRON AREA
 - TERMINAL 2 CONCOURSE (T2C)
 - MODIFICATION TO EXISTING RUNWAY
 - MINOR MODIFICATIONS TO MIDFIELD DEVELOPMENT
 - WESTERN SUPPORT AREA
 - EASTERN SUPPORT AREA
 - LOCATIONS OF NEW HKIAAA MARKER BUOYS
 - LOCATION OF AIR TRAFFIC CONTROL TOWER
 - LOCATION OF AIR TRAFFIC AUXILIARY TOWER

Copyright in this document and all proprietary rights in the information it contains belong to the AA. It is a condition of the supply of this document, in whatever form, that the recipient shall hold it in confidence and shall not duplicate or otherwise reproduce it in whole or in part, nor disclose its contents without the written consent of the AA.

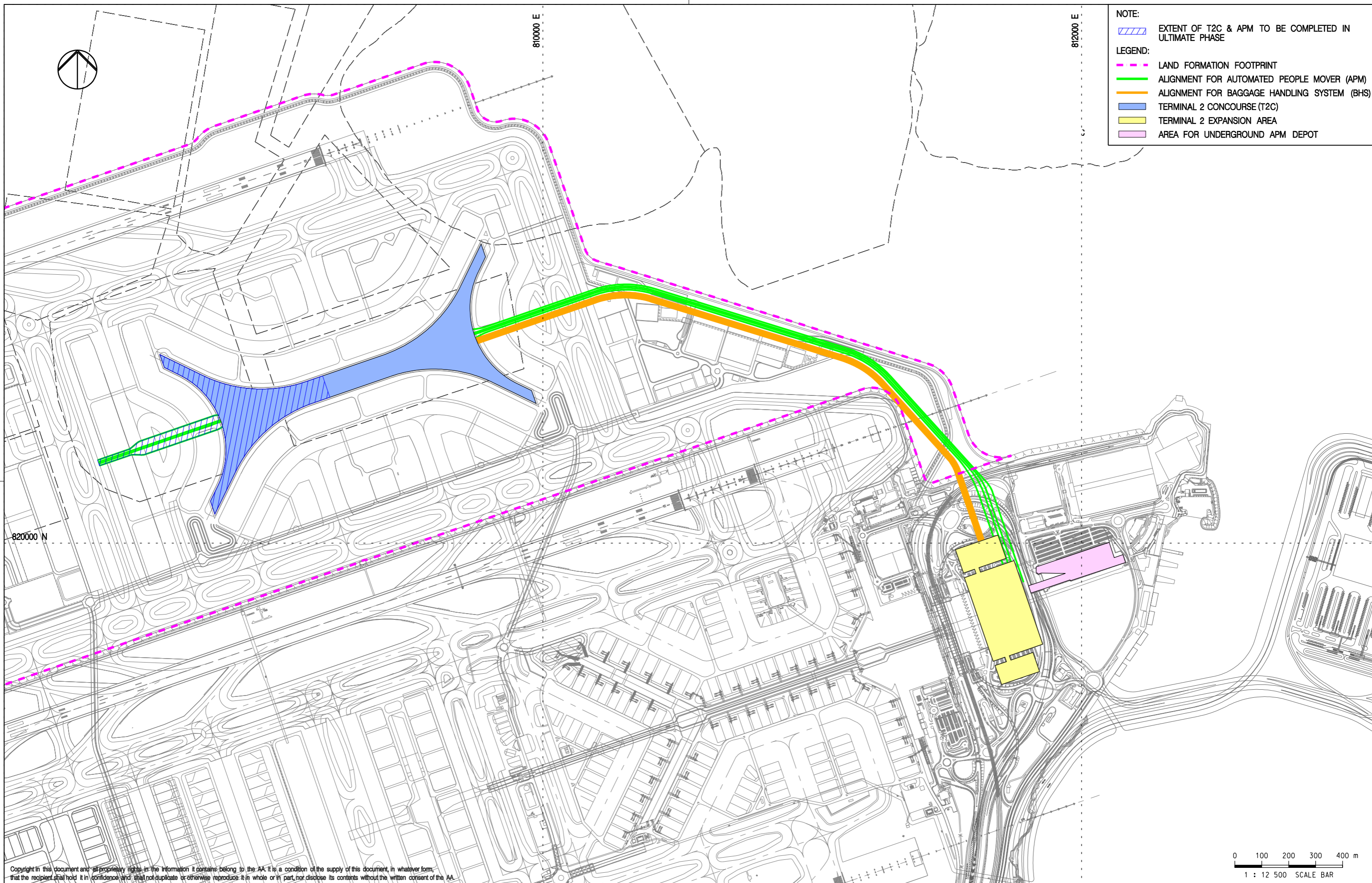
Rev.	Date	Description	Checked
A	31AUG15	FIRST ISSUE	DC
B	17SEP15	GENERAL REVISION	DC
C	22OCT15	GENERAL REVISION	DC
D	05JUN17	GENERAL REVISION	AM



Title
LOCATION PLAN – AIRFIELD FACILITIES

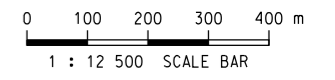
Consultant's Signatures for Approval		Date
Design	DC	05JUN17
Checkers	DC	05JUN17
Approver	EC	05JUN17

EXPANSION OF HONG KONG INTERNATIONAL AIRPORT INTO A THREE-RUNWAY SYSTEM	
Drawing No.	Scale at A3 1 : 25000
Figure 2	Rev. D

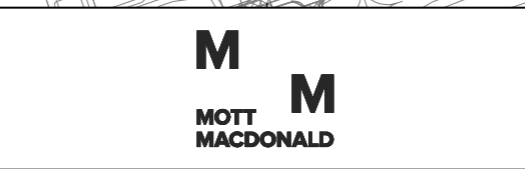


- NOTE:**
 [Hatched box symbol] EXTENT OF T2C & APM TO BE COMPLETED IN ULTIMATE PHASE
- LEGEND:**
- [Dashed magenta line symbol] LAND FORMATION FOOTPRINT
 - [Green line symbol] ALIGNMENT FOR AUTOMATED PEOPLE MOVER (APM)
 - [Orange line symbol] ALIGNMENT FOR BAGGAGE HANDLING SYSTEM (BHS)
 - [Blue area symbol] TERMINAL 2 CONCOURSE (T2C)
 - [Yellow area symbol] TERMINAL 2 EXPANSION AREA
 - [Purple area symbol] AREA FOR UNDERGROUND APM DEPOT

Copyright in this document and all proprietary rights in the information it contains, belong to the AA. It is a condition of the supply of this document, in whatever form, that the recipient shall hold it in confidence and shall not duplicate or otherwise reproduce it in whole or in part, nor disclose its contents without the written consent of the AA.



Rev.	Date	Description	Checked
A	31AUG15	FIRST ISSUE	DC
B	22OCT15	GENERAL REVISION	DC
C	05JUN17	GENERAL REVISION	AM



Title
LOCATION PLAN – PASSENGER FACILITIES

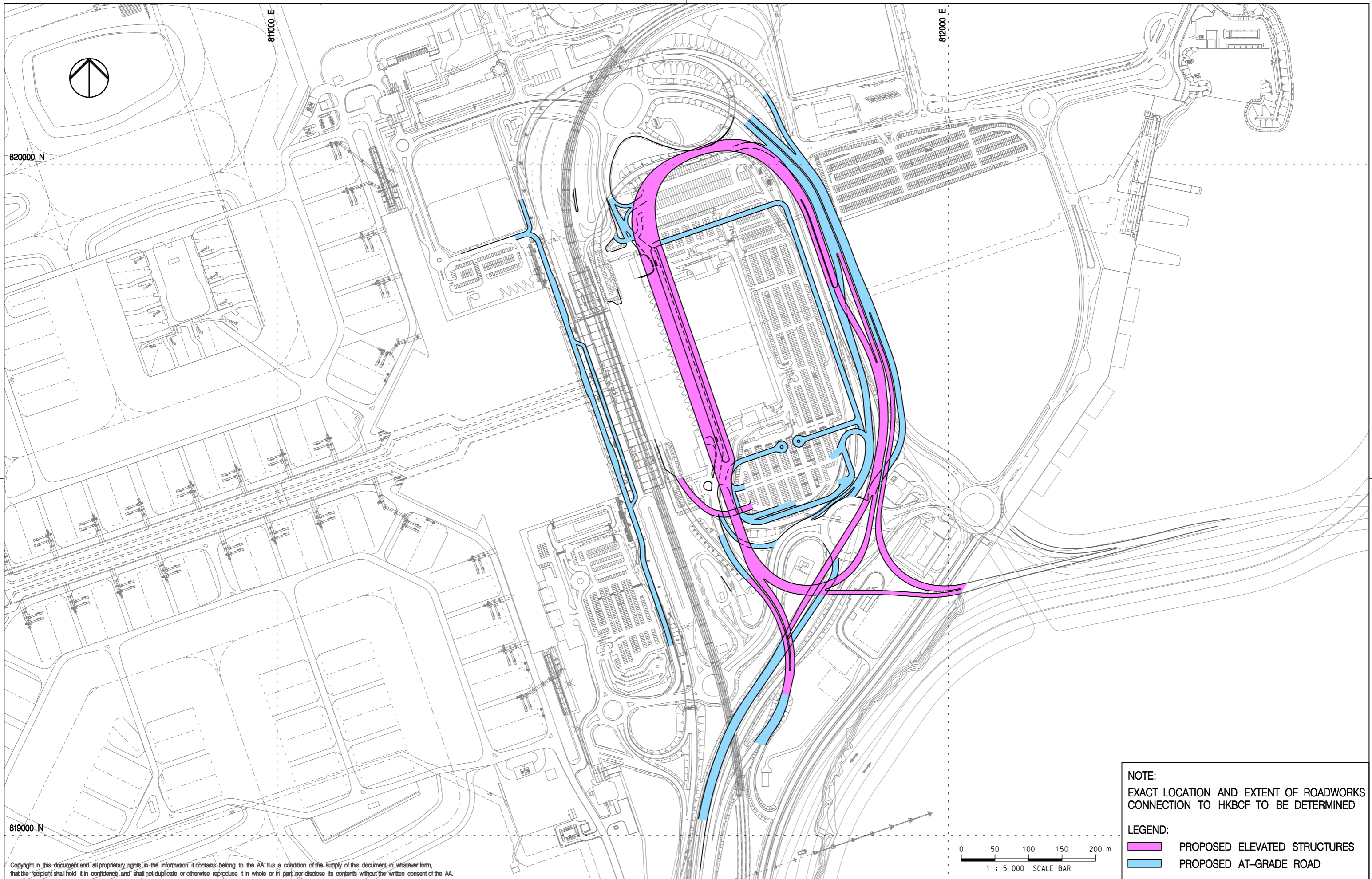
Consultant's Signatures for Approval		Date
Design	DC	05JUN17
Checkers	DC	05JUN17
Approver	EC	05JUN17

EXPANSION OF HONG KONG INTERNATIONAL AIRPORT INTO A THREE-RUNWAY SYSTEM



Drawing No. **Figure 3**

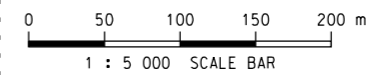
Scale at A3
 1 : 12500

Rev. **C**



NOTE:
EXACT LOCATION AND EXTENT OF ROADWORKS
CONNECTION TO HKBCF TO BE DETERMINED

LEGEND:
 PROPOSED ELEVATED STRUCTURES
 PROPOSED AT-GRADE ROAD



Copyright in this document and all proprietary rights in the information it contains belong to the AA. It is a condition of the supply of this document, in whatever form, that the recipient shall hold it in confidence and shall not duplicate or otherwise reproduce it in whole or in part, nor disclose its contents without the written consent of the AA.

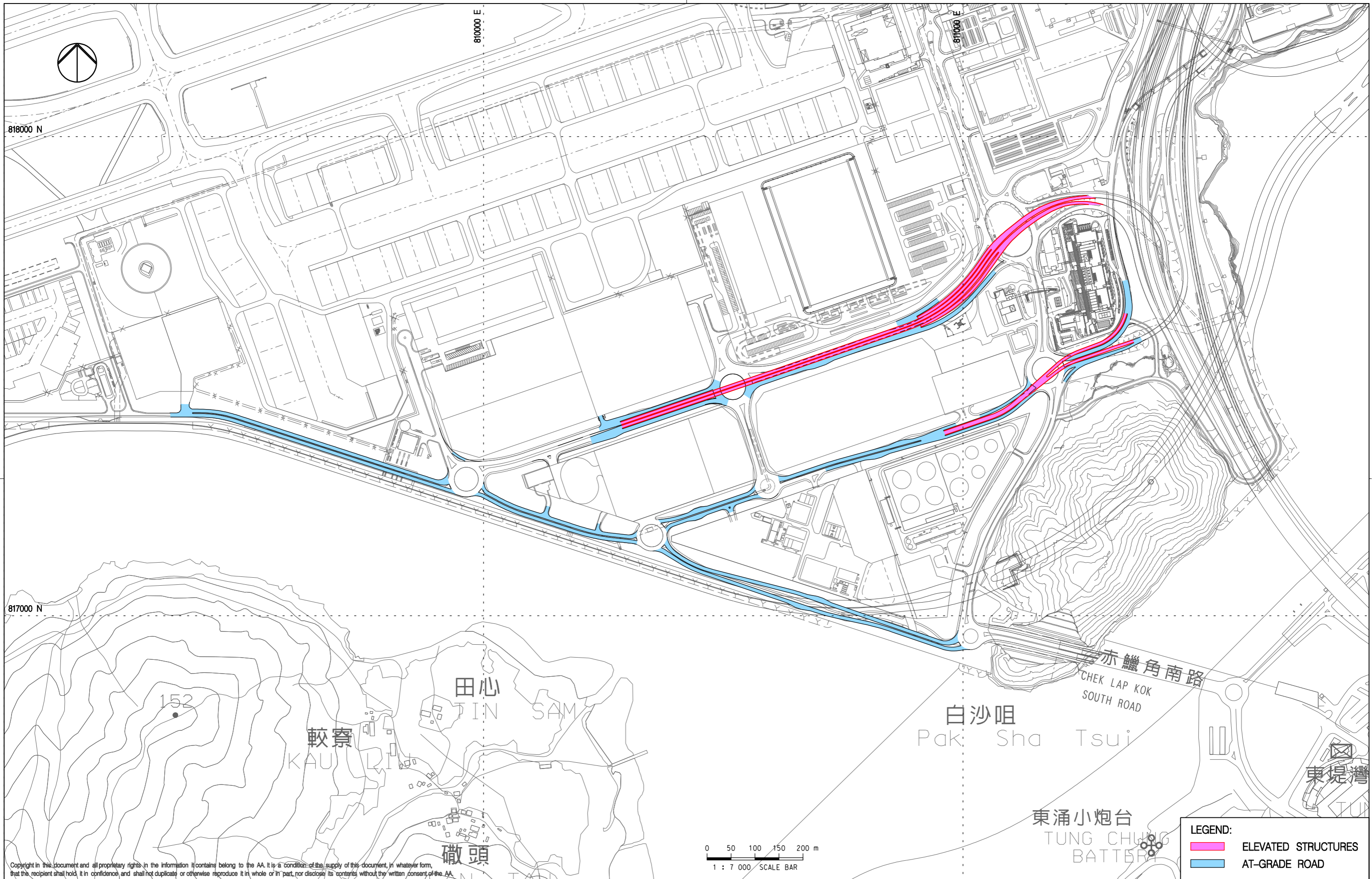
Rev.	Date	Description	Checked
A	31AUG15	FIRST ISSUE	DC
B	22OCT15	GENERAL REVISION	DC



Title
**LOCATION PLAN -
TERMINAL 2 ROAD NETWORK**

Consultant's Signatures for Approval		Date
Design	DC	22OCT15
Checkers	DC	22OCT15
Approver	EC	22OCT15

EXPANSION OF HONG KONG INTERNATIONAL AIRPORT INTO A THREE-RUNWAY SYSTEM	
Drawing No.	Figure 4
Scale at A3	1 : 5000
Rev.	B



Copyright in this document and all proprietary rights in the information it contains belong to the AA. It is a condition of the supply of this document, in whatever form, that the recipient shall hold it in confidence and shall not duplicate or otherwise reproduce it in whole or in part, nor disclose its contents without the written consent of the AA.

Rev.	Date	Description	Checked
A	31AUG15	FIRST ISSUE	DC
B	22OCT15	GENERAL REVISION	DC



Title
LOCATION PLAN - SOUTH CARGO ROAD IMPROVEMENT WORKS

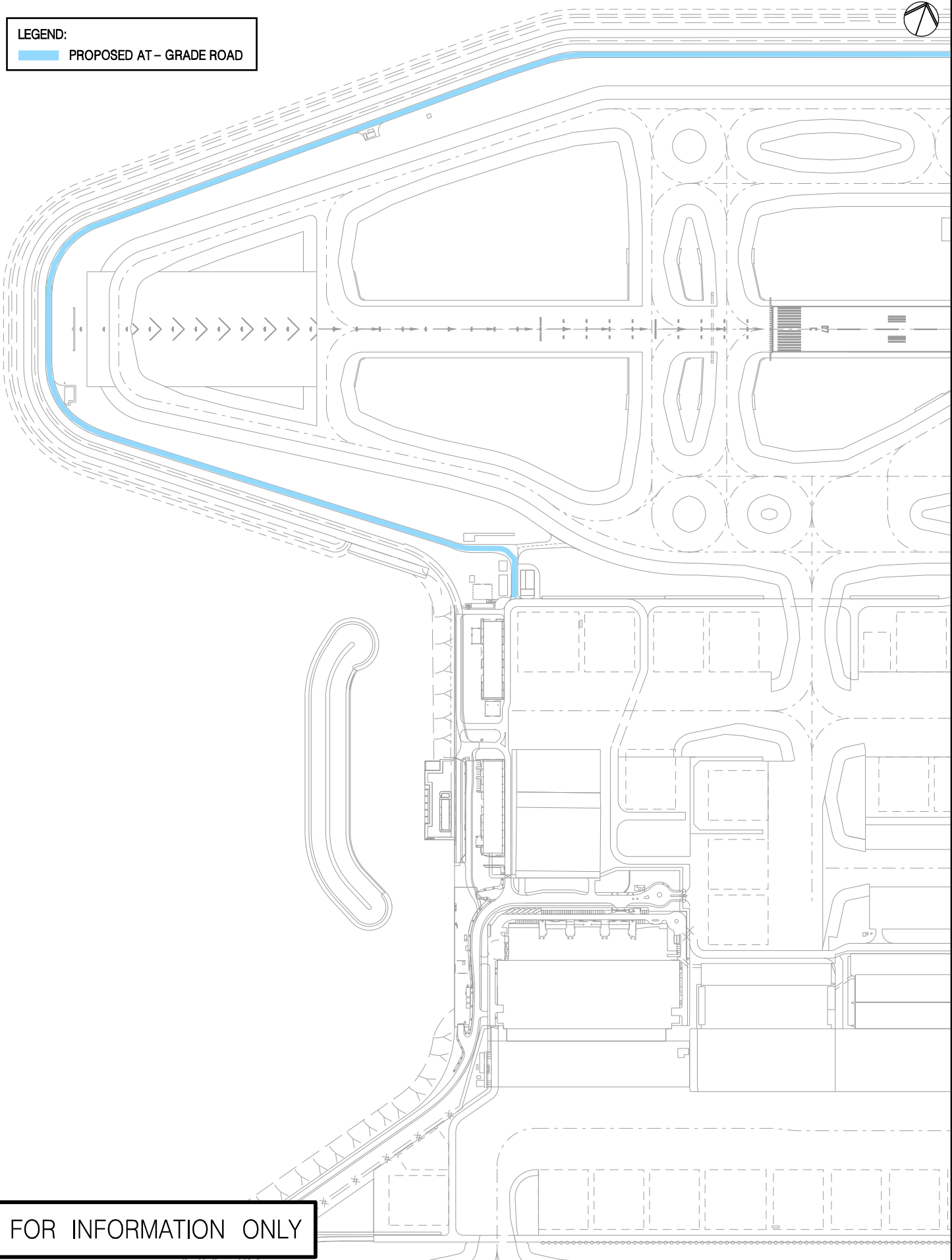
Consultant's Signatures for Approval		Date
Design	DC	22OCT15
Checkers	DC	22OCT15
Approver	EC	22OCT15

EXPANSION OF HONG KONG INTERNATIONAL AIRPORT INTO A THREE-RUNWAY SYSTEM	
Drawing No.	Figure 5
Scale at A3	1 : 7000
Rev.	B



LEGEND:

PROPOSED AT - GRADE ROAD



FOR INFORMATION ONLY

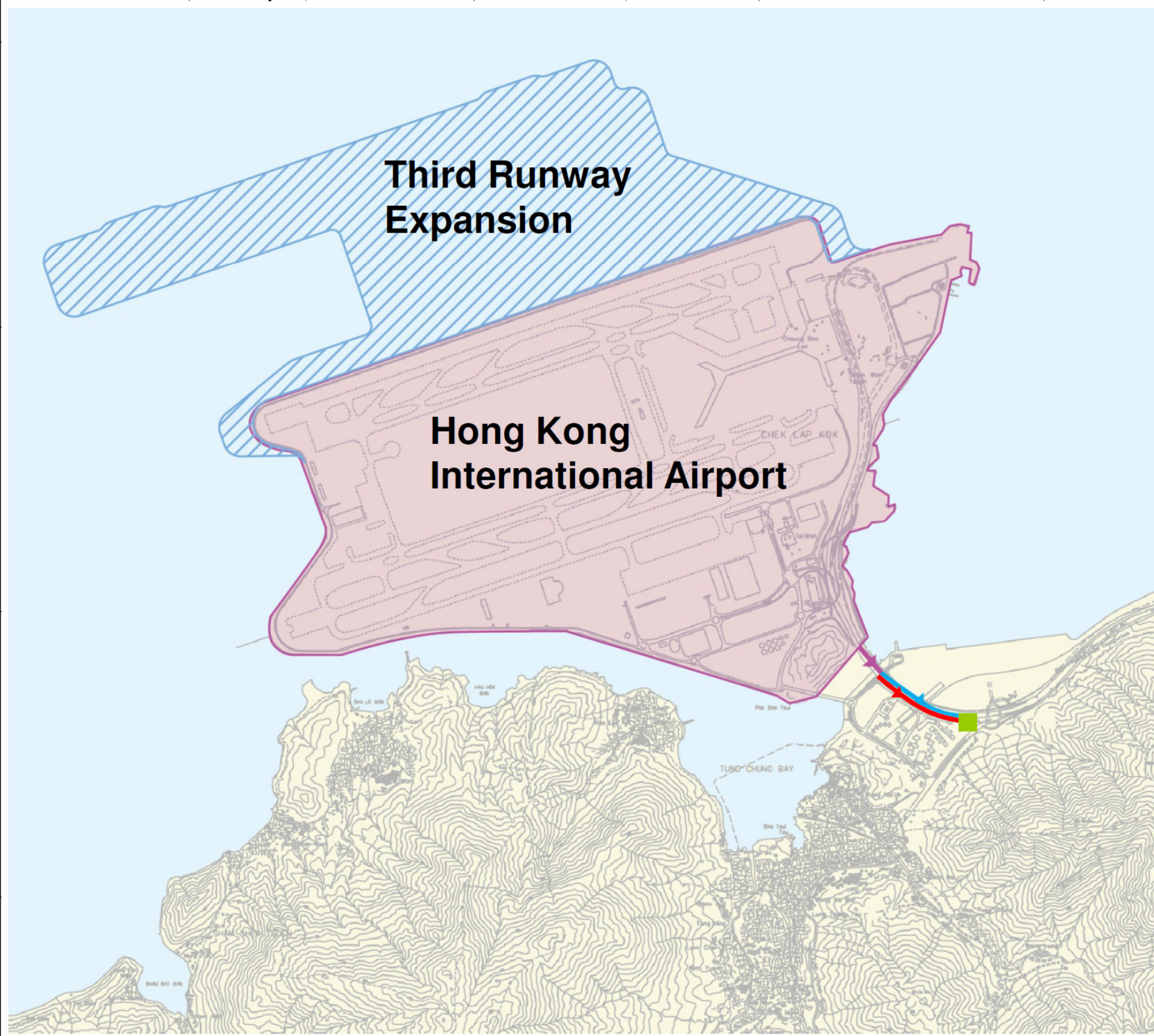






Title	Design	Date
Location Plan - Proposed At-grade Road	-	-
	Checked	-
	Approved	-

Hong Kong International Airport	
Drawing No.	Figure 6
Scale	1 : 6500 (A4)
Rev.	A

Hong Kong International Airport	
Drawing No.	Figure 6
Scale	1 : 6500 (A4)
Rev.	A

Plot file : PD_halfstone_A3_A4.pdf_Luphoig



-  Gravity Sewer to be upgraded by AAHK
-  Existing Rising Main from Airport to Tung Chung
-  Existing Gravity Sewer from Airport to TCSPS
-  Tung Chung Sewage Pumping Station (TCSPS)

Rev.	Date	Description	Checked
A	31AUG15	FIRST ISSUE	DC



Title
GRAVITY SEWER TO BE UPGRADED

Consultant's Signatures for Approval	Date
Design DC	31AUG15
Checkers DC	31AUG15
Design Supervisor EC	31AUG15
Authorised Representative JFP	31AUG15

EXPANSION OF HONG KONG INTERNATIONAL AIRPORT INTO A THREE-RUNWAY SYSTEM	
Drawing No.	Figure 7
Scale at A3	1 : 30000
Rev.	A